



Cycling



Wearable



Balance



Download
the app

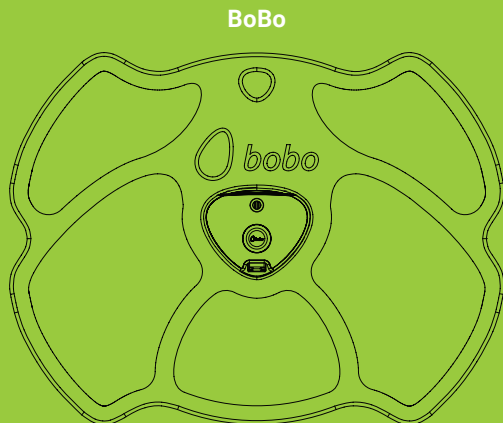


Switch on and pair
with Bluetooth



Start
training

What's in the box?



BoBo

Phone/tablet stand



Wall mount kit



Motion sensor



Straps

30cm  X1

60cm  X1

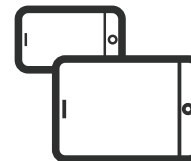
90cm  X1

Let's begin!

1

Download the app

Download **bobo pro 2.0** to your phone or tablet.



2

Launch

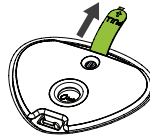
Open the **bobo pro 2.0** app.



3

Unwrap

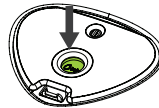
Remove the plastic foil (first time only).



4

Switch on

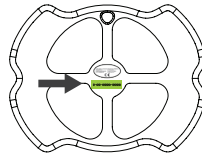
Press the power button briefly.



5

Activate your BoBo

Follow the prompts in the app. (The product key is printed on the back of your BoBo.)



Operation status light



Power on – blue light turns orange



Searching mode – blinks blue



Pairing successful – blinks green



To switch off the BoBo, press and hold the power button. Wait for 2 red blinks.

Pairing is automatic

Simply enable Bluetooth on your phone or tablet. Do not manually pair the BoBo with your phone or tablet. If you accidentally do so, disconnect the BoBo from the list of connected Bluetooth devices on your phone or tablet.

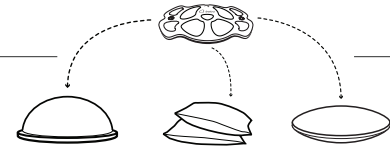
To conserve the battery, BoBo shuts off automatically:

- When it is not paired for 2 minutes.
- When not used for 10 minutes.
- When Bluetooth is disconnected.
- When the app is closed.

Now you're ready to go!

How to stand on the BoBo

Place the BoBo in the center of a cushion or other balance platform. Ensure that the BoBo is properly balanced. **Do not use the BoBo if it slips off the balance platform.**



If the platform is low:

Place one foot on one side of the BoBo and apply weight. The BoBo will tip toward that foot until the edge of the board rests on the floor. Shift your weight entirely onto that leg, holding onto something sturdy for support if necessary.



Place your other foot on the opposite side of the BoBo, at an equal distance from the center.

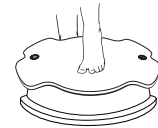


Shift your weight back and forth until you are evenly balanced.

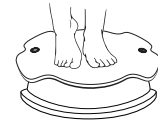


If the platform is high:

Place one foot in the middle of the BoBo, and slowly shift your weight onto it.



Place your free foot next to your other foot.



Slide your feet apart slowly, one foot at a time, without lifting them up.



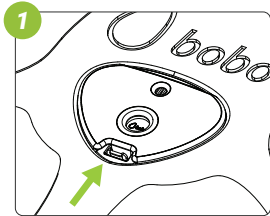
Shift your weight back and forth until you are evenly balanced.



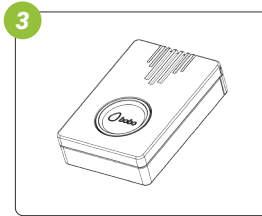
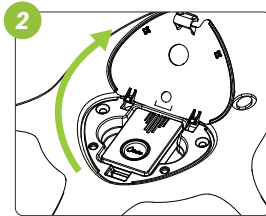
Standing on the BoBo can initially present a major challenge. Balance yourself by holding on to something sturdy. Wean yourself of the need for support, one finger at a time, as your balance improves.

Replacing the Battery

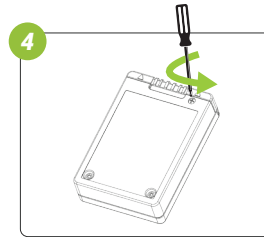
battery type: CR-2032



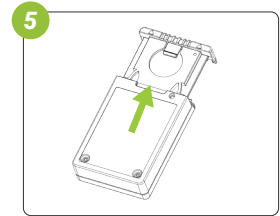
1 Push on the cover snap and open the cover



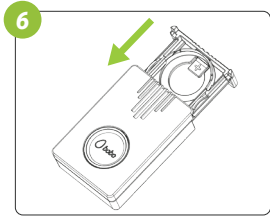
3 Remove the motion sensor



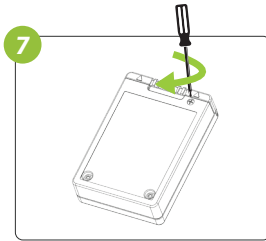
4 Use a screwdriver to open the safety screw



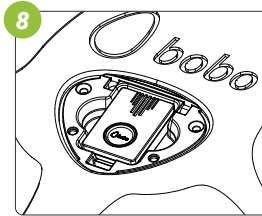
5 Pull out the battery drawer and safely dispose of the empty battery



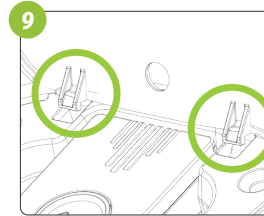
6 Place the new battery, "+" facing down and close the drawer



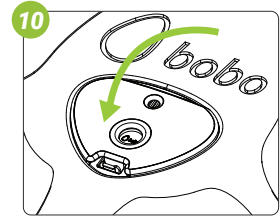
7 Secure the drawer in place with the safety screw



8 Return the motion sensor to the BoBo



9 Replace the cover, ensuring both hinges are in their slots



10 Close the cover, pressing down till you hear a click



WARNING! Chemical burn hazard. Do not ingest battery.

This product contains a coin/button cell battery. If the battery compartment does not close securely, stop using the product. Keep new and used batteries away from children. If the coin/button cell battery is swallowed, it can cause severe internal burns in just two hours and can lead to death. If you suspect batteries have been swallowed or inserted into any part of the body, seek immediate medical attention.

Troubleshooting

App does not connect to my BoBo

- Make sure you are using the **bobo pro 2.0** app (and not other BoBo app).
- Verify that the BoBo is switched on (blinking blue LED).
- Verify that Bluetooth is enabled on your device.
- Note: Device Bluetooth pairing is automatic. To make sure the BoBo is not paired to your smart device, in Settings > Bluetooth > Connected Devices, click the BoBo device ID and select "Forget".

Cannot complete activation process

- An active internet connection is required, so make sure your internet connection works.

BoBo power light is off

- Try to switch on the BoBo by briefly pressing the power button.
- Replace the battery (instructions on previous page).



Instructions for use

Take these precautions before each use of your BoBo:

- Inspect the balance device for nicks, tears, punctures, or other damage. If you find defects, do not use the balance device.
- Use the BoBo and the balance device in an open area on a flat, dry, level, and stable floor. Do not use on an incline.
- During training you may find it necessary to dismount the BoBo quickly. Therefore, make sure the area is clear of furniture and other obstacles.
- Initially, be sure you have firm support such as a wall, bar, or stable table within arm's reach. Keep using the support as necessary to avoid falling during training.
- Clear away objects on the floor that could puncture or otherwise damage the balance device.
- After placing the BoBo at the center of the balance device, ensure that the BoBo is properly balanced. Do not use the BoBo if it slips off the device.
- Go barefoot or wear sneakers or sports shoes.
- Do not use the BoBo for bouncing or jumping exercises.
- No more than one person at a time should use the BoBo.
- Avoid stepping or standing on the edges of the BoBo.
- Do not expose the BoBo to liquids or extremes of heat or cold.
- Do not use the BoBo if you are under the influence of alcohol or any other substance that could affect your sense of balance or perception, causing you to slip or fall.
- An adult must explain all safety information and usage guidelines to children or other users with mental or cognitive issues. Failure to do so may result in bodily injury and/or damage to the system or other property. Observe children during gameplay for proper and safe use of the BoBo.

Important safety instructions

- Do not dismantle, disassemble, open, or otherwise alter the BoBo, except for the purpose of changing the battery.
- The BoBo contains a combustible coin lithium battery. Keep it away from heat sources such as fires, ovens, microwave ovens, and direct sunlight.
- If the battery leaks, stop using the BoBo immediately and contact BoBo technical support.
- Never charge the batteries. Charging these batteries may cause leaks, overheating, explosions, or fires.
- Keep the BoBo dry. Do not use with wet hands or in a wet environment. Moisture can cause electric shock.
- Do not store the BoBo in a hot or humid environment such as a car parked in direct sunlight.

**BO&BO LTD. ASSUMES NO LIABILITY FOR INJURY OR DAMAGES THAT MAY OCCUR WITH THE USE OF THIS PRODUCT.
THE CONSUMER ASSUMES ALL LIABILITY AND USES THIS PRODUCT AT THEIR OWN RISK.**

ATTENTION!

Read before use:



Use a support device if required.



Children require adult supervision.



Clear foreign objects away from the exercise area.



Ensure you read the detailed safety instructions on the back of this page.



Caution! Slippery when wet.

Maintenance instructions:



Avoid dropping the unit.



Do not disassemble or insert foreign objects into the unit.



Avoid contact with water.



Do not wipe the surface of the unit with alcohol or abrasives.



For technical support, write to support@bobo-balance.shop



ID: SH6MDBT42V